

HARTMANN & FORBES

STUDIO CONCEPTS





H&F STUDIO CONCEPTS

ARCHETYPE WEAVES IN THE MAKING

Founded by artistic curiosity and aimed at presenting a grouping of individual, limited-edition designs of exotic fibers that, over time, may evolve and reside inside a broader collection.



NEW
LE6509
KUTA

Traditional basketry from Bali's Kuta Beach inspired this series. Hand-placed strands of vetiver set off with twisted yarn, woven with ramie rivulets, produce a richly textural landscape showcasing the fibers' rustic quality and artisanal character.

Price Group: 4 | Max Width: 100"
Available Styles: Roman, Top Treatment

Shown: LE6509 Kuta, Old Style Roman





LE6015 PLAIT

Meticulously jacquard-handloomed, this limited-edition series lends an artisanal look to an interior. Dimensional strands of natural banana fiber are braided by hand and woven into a ramie ground in an undulating pattern, the complex layering of textural materials yielding rich, organic beauty.

LE6109 CREEL

Rugged wicker baskets used by anglers to carry fish inspired this limited-edition windowcovering series. Woven on a jacquard-handloom, Creel's cream-colored ramie ground is punctuated with hand-placed contrasting patches of soft-brown water hyacinth fibers in a rhythmic interplay of texture and tone.

Price Group: 4 | Max Width: 100"
Available Styles: Roman, Top Treatment

Shown: LE6109 Creel, Old Style Roman
WL426-09 Savannah - Ogeechee, Wallcovering





LE4339 TWEED

Created of ramie and interweaving tones of refined gray and neutral warps, this openly checked pattern is a light and modern approach to historical tweed.

Price Group: 4 | Max Width: 180"
Available Styles: Roman, Roller, Top Treatment



LE4481 TATTERSALL

Created in honor of the historical 18th century Tattersall blanket pattern, this modern perspective is composed of interwoven indigo warp threads and ramie, highlighting strong vertical lines with contrasting neutrals.

Price Group: 4 | Max Width: 180"
Available Styles: Roman, Roller, Top Treatment



LE4842 HAVANA

Defined by distinctive plaid stripes enriched with an intricate check pattern adding depth and definition against a beige backdrop, Havana is loomed with hand-placed fibers of black abaca and thick, textural ramie. The sensibility is at once relaxed and tailored.

Price Group: 4 | Max Width: 180"
Available Styles: Roman, Top Treatment

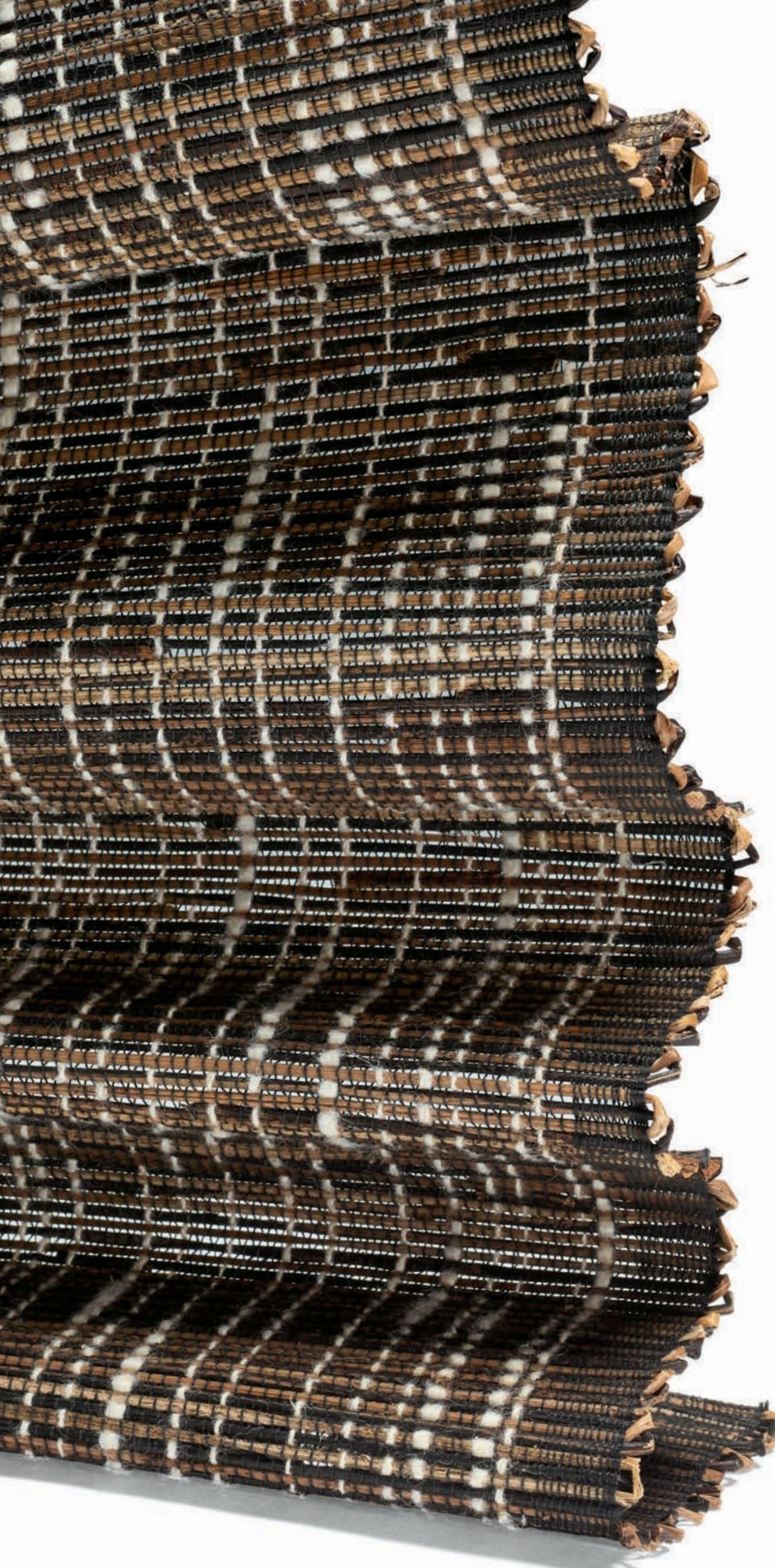
Shown: LE4842 Havana, Old Style Roman

LE4715 MELANGE

A multihued mix of fibers marks the Melange design. Ramie, palm, and black abaca are skillfully twisted together to evoke the heathered look of eagle feathers. The weave – distinctive and dense – combines natural colors to create a slanted, impressionistic pattern.

Price Group: 4 | Max Width: 120"
Available Styles: Roman, Top Treatment





LE4642 GROOVE

Lending a vibrant and earthy uptake on mid-century modern, this upbeat and textural design of abaca fiber is complemented with hand-placed water hyacinth and a continuous warp thread of woody neutrals.



Price Group: 4 | Max Width: 180"
Available Styles: Roman, Roller, Top Treatment

Shown: LE4642 Groove, Old Style Roman

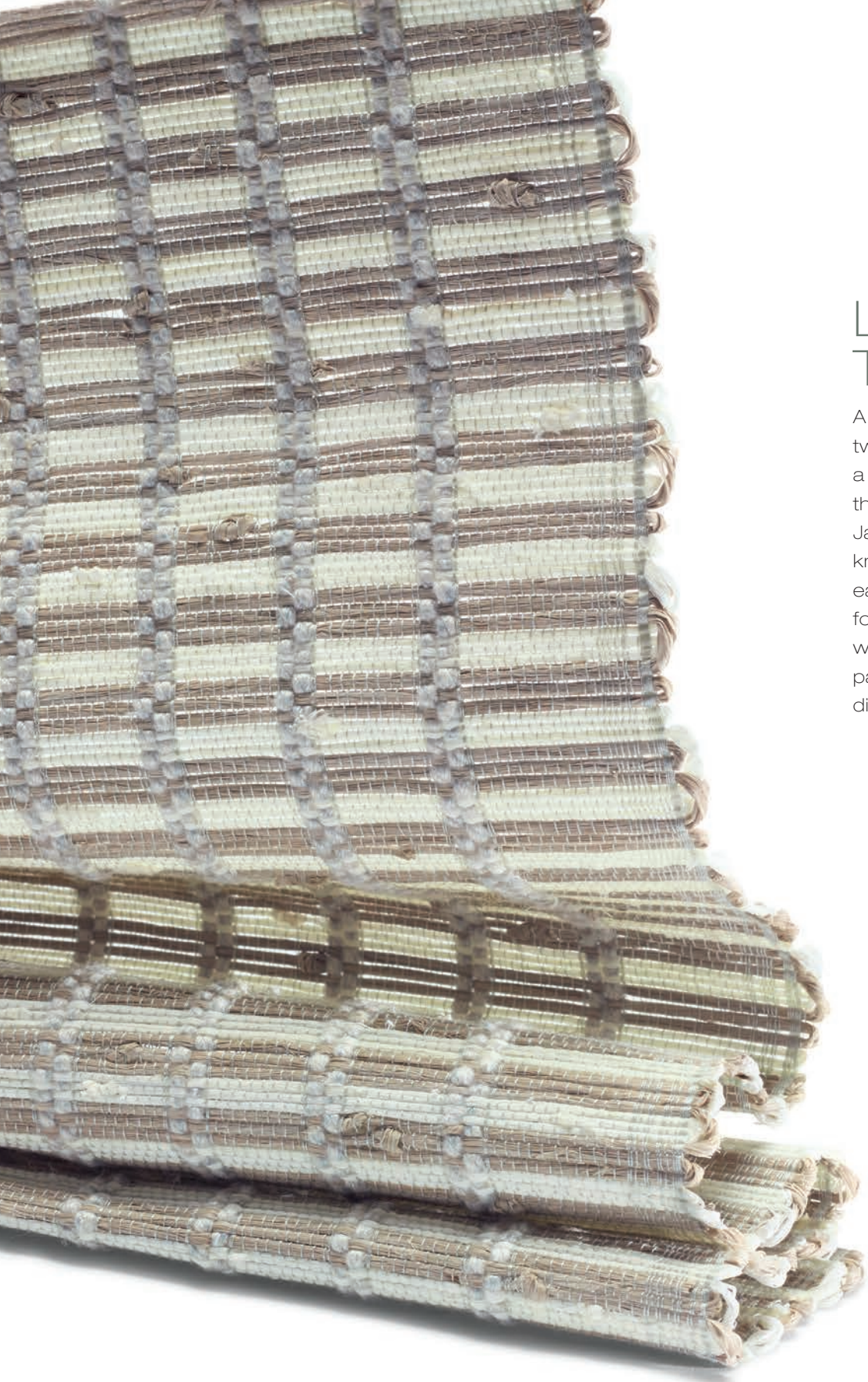


LE4587 CABLE

Inspired by centuries-old traditional African hand braiding, this textural pattern is punctuated by intricately-braided dark ramie and enlightened by playful cream warp threads.

Price Group: 4 | Max Width: 180"
Available Styles: Roman, Top Treatment

Shown: LE4587 Cable, Old Style Roman



LE4918 TATAMI

A thick warp of double-twisted palm yarns yields a textural landscape that conjures traditional Japanese mats. Hand-knotted fibers in two earthy colors combine to form a tonal grid pattern, while allowing light to pass through like a dimensional screen.



LE5051 PIMA

Masterfully interwoven with a mix of thick and thin ramie fibers creating a variegated palette, Pima features a freeform composition of subtle, open stripes. Elegant, white striations are reminiscent of cotton fields, which enhances the tactile richness and rustic-meets-refined feel.