

HARTMANN & FORBES®

FEATURED IN



Publication: Paper City Houston

Date: March 2021

Article: Check It Out | p61

Product Shown:

CHECK IT OUT



JG Plaid wallcovering and shade

J Randall Powers often uses suiting patterns and textures in his projects, many of which have been featured in *Architectural Digest*, *Elle Decor*, and *Veranda*, among other national publications. Now he's launching a new collection of window shades and wallcoverings for Hartmann&Forbes that focuses on his beloved menswear-inspired plaids and checks. "When they first approached me about doing a collaboration, I jumped at the chance to create designs I felt were really missing in the marketplace," he says. "There are so many patterns out there, but few that feel structured and masculine. Checks and plaids provide a quiet, sophisticated feel that layers well with big florals and patterns, so it was a natural starting place for the collection."

Hand-woven by artisans in the

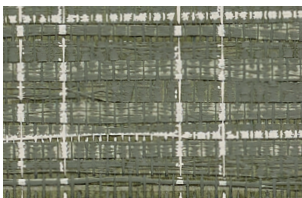
South Pacific from linen and sisal, Hartmann&Forbes' shades are finished by master craftsmen near Portland, Oregon. The fibers' natural imperfections add to the organic appeal, especially when weaving a precise grid pattern such as checks, says Rebecca Welch, director of product development at Hartmann&Forbes, who worked with Powers on the collection. Everything is woven to custom specifications to accommodate any size window; very

large window coverings require massive looms operated by up to four artisans. "We have a definite look with natural fibers and textural designs, but Randy is taking it to a different level with the checks and plaids, and in colors we might not use, like brick and slate. He has a really good eye," Welch says.

The initial collection includes window coverings in Christopher and Apsley checks, JG plaid, and Baldwin stripe, and wallcoverings in JG plaid and Christopher check. But that's just the start. "As far as what's next," Powers says, "stay tuned for a bit more eccentricity and a touch of mischief for collection two." *J. Randall Powers Collection by Hartmann&Forbes, to the trade at Culp Associates, Decorative Center Houston, 5120 Woodway Dr., culpassociates.com; hartmannforbes.com. Rebecca Sherman*



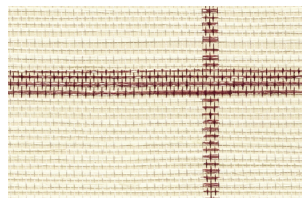
Christopher Check wallcovering and shade



WLJP25-78
JG Plaid - Linen on Moss



LEJP22-12
JG Plaid - Moss on Linen



WLJP24-72
Christopher Check - Brick



LEJP21-72
Christopher Check - Brick

Order no-charge memos online at hartmannforbes.com or contact your local representative showroom.