



# HARTMANN & FORBES®

2019 EDITION

INTRODUCING THE  
**MICHAEL S SMITH COLLECTION**

H&F NEW ARRIVALS  
NEW 2019 REFERENCE KIT



THE  
DESIGNERS'  
EDGE

If you note a certain light in our eyes at the end of our 20th Anniversary, it's because we see even more to celebrate on the verge of our twenty-first year.

Through much good fortune and hard work we've managed to grow, organically, to offer the largest handwoven natural shade collection in the industry — complemented by an ever-expanding selection of natural wallcoverings and fabrics.

This means we can now bring you whatever you need to do award-winning, one-of-one work. And that means the world to us — because we value the art of crafting long-term relationships as much as crafting fine products.

So we go forward more determined than ever to honor the designer-as-hero, remain exclusively to-the-trade, and bring designers a strong creative and competitive edge — with handcrafted quality, hands-on service, broad selection and approachable price.

Above all, we will not rest in our quest to give designers compelling new products and unique stories to impress their discerning clients.

Thank you for joining us on the journey. I hope you enjoy our new introductions for 2019, including our inaugural collaboration with renowned designer Michael S Smith.



Sláinte,  
Michael Jones  
Founder

A handwritten signature in black ink, appearing to read 'MJ', written over the printed name 'Michael Jones'.







MICHAEL S SMITH  
BY  
HARTMANN&FORBES®

Recognized as one of the design industry's most respected talents, MICHAEL S SMITH is well known for his signature blend of European Classicism and American Modernism.

The MICHAEL S SMITH COLLECTION exudes a well-travelled, comfortable sensibility. The blending of historically referenced patterns in bold, simple colors, combined with the textural detailing expected from HARTMANN&FORBES, offers a fresh, globally-inspired collection of natural window and wallcoverings.





## JAPÓN GARDEN AND JUNSEI

Inspired by antique, hand-carved abaca stencils, Japón Garden is a woven wallcovering imbued with rich, bold patterns that evoke flora in unusual and unexpected ways. It's hand-mixed pigments coordinate well with the refined Colourweave – Junsei. Reminiscent of traditional Japanese screens, this weave is handwoven with thinly sliced bamboo, allowing the sunlight to gently filter in.



SUDARE STYLE  
ROMAN SHADE

JUNSEI Natural Windowcovering



CWMS80 Matsu | shown



CWMS82 Tochi



CWMS81 Hinoki

JAPÓN GARDEN Natural Wallcovering



WLMS74-51 Amber | shown



WLMS74-18 Stone



WLMS74-12 Mist



WLMS74-30 Verde

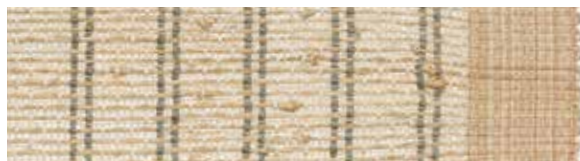


WLMS74-57 Red/Blue

# CITY STITCH AND KAMAKURA

Kamakura merges geometric shapes with Japanese imagery. The complex composition of this wallcovering depicts beauty and serenity in a thoughtful, artistic way. Coordinating seamlessly with City Stitch, this unique handwoven grassweave combines functional embroidery with meticulous, decorative stitching to create a sophisticated mix of texture, color and pattern.

## CITY STITCH Natural Windowcovering



LEMS71-54 Malachite | shown



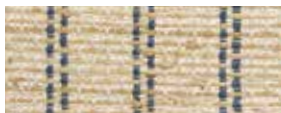
LEMS71-06 Ivory



LEMS71-72 Ruby



LEMS71-09 Limestone



LEMS71-57 Lapis

## KAMAKURA Natural Wallcovering



WLMS75-54 Malachite | shown



WLMS75-42 Bronze



WLMS75-57 Lapis



WLMS75-72 Ruby



TRADITIONAL STYLE  
ROMAN SHADE  
City Stitch features a  
2' plain woven border







CASCADE Natural Windowcovering



LEMS70-12 Ivory | shown



LEMS70-51 Limestone



LEMS70-55 Malachite

MAJORELLE Natural Wallcovering



WLMS73-06 Sandstone | shown



WLMS73-32 Celadon



OLD STYLE  
ROMAN SHADE

## CASCADE AND MAJORELLE

A sublime wallcovering featuring graphic arrangements reminiscent of architectural lattice screens found in palaces and temples from Morocco to the Middle East. The soft warm color palette of Majorelle pairs perfectly with the elegant sophistication of Cascade. The vertical stitch pattern of this handwoven grassweave is asymmetrical and highlighted by subtle but glamorous metallic strands.





## AGRA LATTICE

Inspired by beautiful, hand-turned spindle designs used throughout Indian architecture for generations, Agra Lattice depicts a maze-like, hand-stenciled pattern with abstracts that play upon form, texture and movement.

Smith has adapted the traditional spindle motif and has reinterpreted it into a rhythmic arrangement on rich, woven wallcovering that is as meditative as it is vibrant.

Natural Wallcovering



WLMS72-27 Sandstone

WLMS72-51 Limestone

WLMS72-57 Azul | shown

# H&F STUDIO

## in-house design



Natural Windowcovering

## ESSENCE

This foundational weave, from the Woven-to-Size Grassweave Collection, is offered in a broad assortment of sophisticated colorways. Its refined beauty and lightweight design offers a simple narrative, pairing well with the new Michael S Smith Collection.



OLD STYLE ROMAN SHADE  
LE3054 Essence – Sprig

DRAPERY  
EW91G Brushed – Genoa

PERFORMANCE ROLLERSHADE  
G03 9000 – Snow

HANDWOVEN BORDER TRIM  
TBC55 – Sprig

Furnishings courtesy Palecek





## HANDWOVEN BORDER TRIM

An exquisite collection of custom handwoven border trims featuring geometric designs. By-the-Yard or handsewn to the bottom of a Roller Style shade or Roman Shade with Drop Hem upgrade. Coordinates beautifully with the Essence Series.

### CHEVRON



TBC12 Sand



TBC51 Saffron



TBC15 Muslin



TBC55 Sprig



TBC57 Denim

### DIAMOND



TBD12 Sand



TBD51 Saffron



TBD15 Muslin



TBD55 Sprig



TBD57 Denim



# PERFORMANCE FABRIC

The new 8000 series offers a refined texture with 5% openness displaying a soft contemporary design. The 7000 and 9000 series are updated with new colorways to coordinate with our natural weaves.



8000 Series – six new colorways



7000 Series – three new colorways



9000 Series – one new colorway

# REFERENCE KIT 2019

The new 2019 Reference Kit featuring our complete natural product collections has launched. The kit is comprised of three pieces which include:

## PRODUCT PORTFOLIO

Featuring inspirational photography, swatch images and weave detail.

## STYLE GUIDE

Visual representation of new products, specifications, options and upgrades ideal for selecting the perfect style.

## PRICE LIST

Includes full weave detail of all products, pricing, measuring instructions, and pricing worksheets.

Download or order a Reference Kit online at [HARTMANNFORBES.com](http://HARTMANNFORBES.com) or contact your local representative showroom.



## NEW STYLES

### NATURAL WOVEN SHADES



## SUDARE STYLE

A fresh expression of a classical Japanese design, this shade style blends modern roman-fold operation with a handsewn decorative bamboo-fabric trim. *p5*



## ROLLERFOLD™ STYLE

This innovative style combines the aesthetic beauty of a roman-fold shade with the sleek performance and child safety features of a Roller Style shade. The Rollerfold eliminates shade-body operational cords yet mimics the look of a roman shade. (Patent Pending)

**BEST NEW  
STYLE CONCEPT  
WINNER**

**PRODUCT  
OF THE YEAR  
WINNER**



**BEST FOR KIDS  
CERTIFIED  
WHEN AUTOMATED**



## DUAL SHADE – ROLLER | ROLLER

A Dual Shade system that features a natural roller style shade in front of a Performance Rollershade, delivering a mix of light, sun and privacy control.



## NEW STYLES

---



Design – Tiffany Home Design | Photo – Elijah Hoffman



### FABRIC SHADE

#### CASUAL STYLE

A roman shade that defines casual elegance. Well suited for our Soft Natural Fabrics; when drawn its unstructured drape captures the essence of relaxed living.



### PERFORMANCE ROLLERSHADE

#### CORDLESS ROLLERSHADE

An innovative, cord-free shade operated by a smooth and silent spring system, delivers a simple and safe solution for spaces that solicit a cordless choice. With one easy pull, this rollershade lifts in a quiet and controlled motion.

## NEW UPGRADES

---

### FIXED FOLD HEM

Three folds are permanently handsewn into the hem of a roman shade to soften the look when in the lowered position.

### DROP HEM

A Drop Hem elevates a roman shade to a more formal decorative aesthetic and allows an option to add trim.



# NEW TOP TREATMENTS

---



PAINTED

## BAMBOO CORNICE

Available stained in warm, natural tones, painted with standard colors or custom painted.



## CASSETTE CHANNEL SYSTEM

A curved metal fascia, with a selected natural weave or wallcovering insert, provides a modern clean appearance to coordinate with an underlying rollershade.



## FAUX-ROMAN VALANCE

Features three-fixed folds to mimic the look of an Old-Style roman shade when pulled up. *Shown with drop hem.*  
*Available 12," 18," or 24"L*

## ULTRA METAL CLUTCH & HEM BAR

An exposed modern metal clutch and hem bar that deliver a subtle statement of luxury.





FEATURED  
SHOW  
HOUSES





top-left

**SAN FRANCISCO  
DECORATOR SHOWHOUSE**

SAN FRANCISCO, CA  
designer: eden wright design  
photo: christopher stark

LE2336 Macrame – Gris  
Old Style Roman  
Woven-to-Size Grassweave

bottom-left

**KIPS BAY DECORATOR  
SHOWHOUSE**

NEW YORK, NY  
designer: brian del toro  
photo: marco ricco

LE2630 Tabaret – Lawn  
Old Style Roman  
Woven-to-Size Grassweave

above

**THE STREET  
OF DREAMS**

portland, OR  
designer: tiffany home design  
photo: gregory dean

PE603-63w Serenity – Warm Slate 5" warp  
Old Style Roman  
Woven-to-Size Papyrusweave

NATURAL  
WINDOWCOVERINGS,  
WALLCOVERINGS &  
TEXTILES HANDCRAFTED  
FOR THE TRADE IN  
EDITIONS OF ONE



PO Box 1149 | Tualatin, OR 97062  
HARTMANNFORBES.COM

t 503.692.9313 | 888.582.8780  
f 503.692.9315

JOIN OUR SOCIAL COMMUNITY



©2019 HARTMANN&FORBES, INC

