

# HARTMANN & FORBES

TAILORED-TO-SIZE GRASSWEAVE



s Marilyn  
WORLD the endangered species  
ANGEL GIFFANO





TAILORED-TO-SIZE

# GRASSWEAVE

---

## LEGACY FIBERS AND TEXTURES

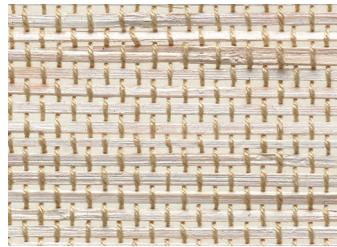
This timeless, textured collection tailored of legacy natural fibers has a relaxed and comfortable charm.

Classic jute, bamboo, river reed and sea grass are woven in a broad range of designs, from Japanese Miyabi inspired refinement to bold and chunky.

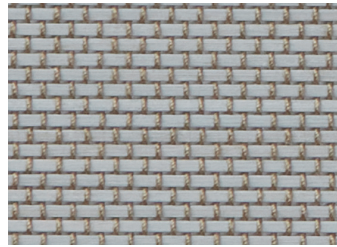


# LINEN

Crisp, minimal and delightfully modern, this series has the natural approachability of linen fabric. Offered in a color palette that complements a wide range of interior color schemes.



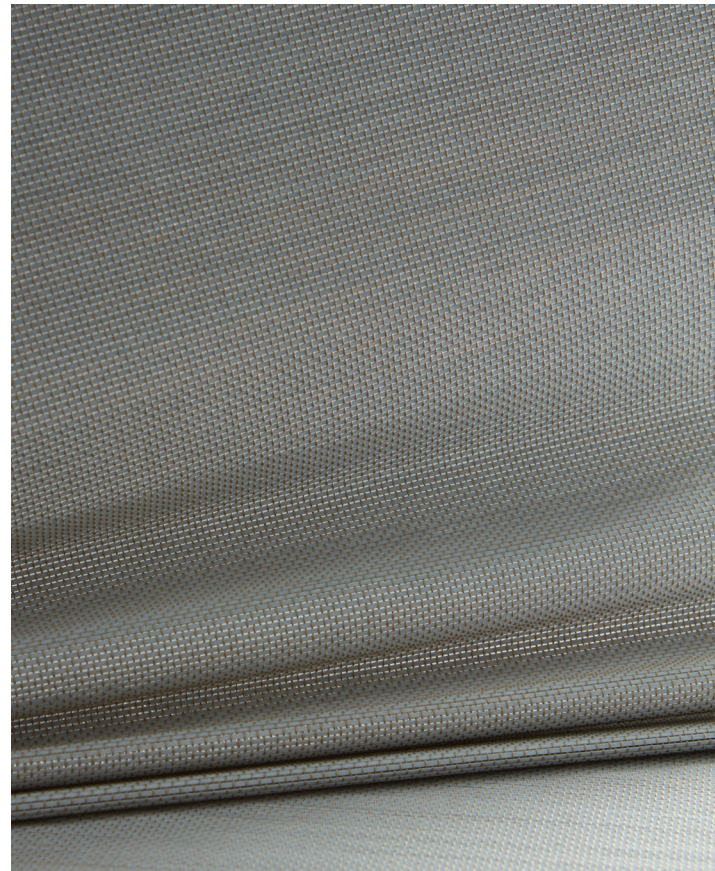
No.91w Winter Linen



No.91m Morning Linen



No.91d Dusk Linen



Price Group: 2 | Max Seamless Width: 96"  
Available Styles: Roman, Top Treatment

Shown: No.91w Linen – Winter Linen, Old Style Roman

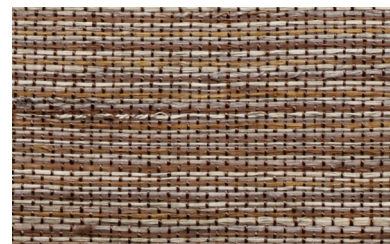


# ESSENTIA

Woven jute fibers distilled to their essential beauty, this lightweight textile is available in a range of delicately heathered earth tones.



KW110 Asa



KW118 Ishi



KW116 Ame



KW112 Kumo



# BLOSSOM

A micro-fine jute textile offered in two neutral colorways to complement an array of interior styles.



KW95 Lotus Blossom



KW92 Pacific Basin







# BASIN

Elegant and finely tailored, this weave offers quiet serenity and soothing tones of sandstone, dappled grey and cocoa brown.



No.93 Yangtze Basin



No.92 Mu Basin



No.95 Saru Basin



No.90 Kanto Basin

Price Group: 2 | Max Seamless Width: 96"  
Available Styles: Roman, Top Treatment

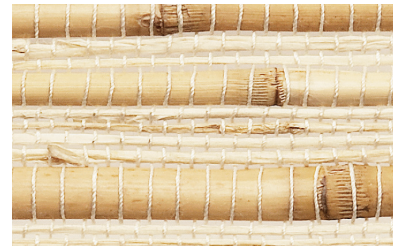
Shown: No.90 Basin – Kanto Basin, Old Style Roman with Valance  
EW144b Sheer Stripe – Balern, By-the-Yard





## PRAIRIE

A prairie landscape of light and dark shading is translated into a jute weave interspersed with wild river reeds.



No.13n Natural Prairie  
Max Width: 96"



No.13s Shadow Prairie  
Max Width: 96"



No.25r Bamboo Rustic w/Reed

## BAMBOO

A unique and differentiated bamboo design that displays creative panache with a combination of flat and rounded fibers woven with a double warp pattern.

## TAKI

Sustainably cultivated premium bamboo strips are hand laid and woven in a minimalistic pattern offering privacy with style.



No.31r Taki Rustic



No.31 Taki Caramel



Price Group: 1 | Max Width: 96," 120"  
Available Styles: Roman, Top Treatment

Shown: No.31n Prairie – Natural Prairie, Old Style Roman

Price Group: 1 | Max Width: 96"  
Available Styles: Roman, Top Treatment

Shown: No.31 Taki – Taki Caramel, Old Style Roman with Edge Binding