



# Natural Wallcovering

## INSTALLATION ADDENDUM – ROCKS 1/2

Please be advised, this addendum pertains to the wallcovering listed below. It is meant to be used in tandem with our full installation instructions for natural, handcrafted wallcoverings located at [hartmannforbes.com/install](http://hartmannforbes.com/install)

### ROCKS SERIES

WLLK48-18 Rocks – Topaz

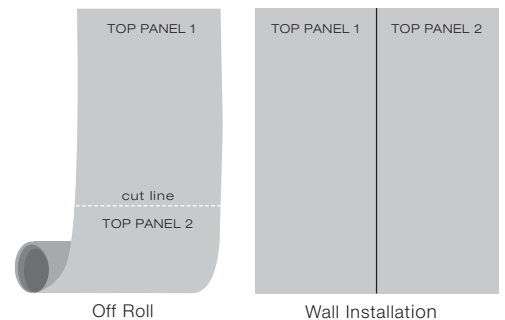
WLLK48-60 Rocks – Pyrite

### CHARACTERISTICS OF SPECIALTY WALLCOVERING

- This wallcovering is handcrafted. There will be irregularities.
- The thickness may be inconsistent and will not line up horizontally or vertically
- Due to the thickness of this wallcovering, please use an appropriate wallcovering cutting blade
- No side-match – use creative freedom for preferred aesthetic

### INSTALLATION INSTRUCTIONS

- Hang wallcovering as it comes off the roll – do not reverse hang (*see illustration at right*)
- Make a note on the back of each strip to indicate the TOP. Stay consistent in aligning pieces with the TOP as the header
- DO use a soft smoothing brush and brush lightly, or smooth softly with your hands
- DO NOT use a hard flat smoothing tool



If you have any questions before, during or after installation, please contact Customer Relations at 888.582.8780 or at [hfc@hartmannforbes.com](mailto:hfc@hartmannforbes.com)

HARTMANN&FORBES ASSUMES NO RESPONSIBILITY FOR THE INSTALLATION

**HARTMANN&FORBES®**

©2022 HARTMANN&FORBES INC. INWALLK48-922



# Natural Wallcovering

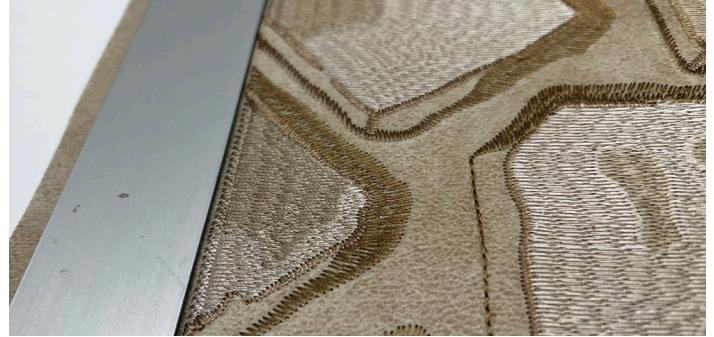
## INSTALLATION ADDENDUM – ROCKS 2/2

WLLK48-18 Rocks – Topaz

WLLK48-60 Rocks – Pyrite



① Rocks has a selvage edge and will need to be table trimmed.



② Using a sharp cutting blade, trim along edge of embroidery pattern.

③ Apply appropriate paste evenly, especially near edges, to the back of the wallcovering, taking care not to get adhesive on face of wallcovering. Allow wallcovering paste to become tacky prior to hanging – timing will vary depending on the temperature and humidity of the room.

④ Hang wallcovering with panels side-by-side, noting the “TOP” of each panel. Panels do not need to align – use creative freedom for preferred aesthetic.



If you have any questions before, during or after installation, please contact Customer Relations at 888.582.8780 or at [hfcf@hartmannforbes.com](mailto:hfcf@hartmannforbes.com)

HARTMANN&FORBES ASSUMES NO RESPONSIBILITY FOR THE INSTALLATION

HARTMANN&FORBES®

© 2022 HARTMANN&FORBES INC. INWALLK48-922